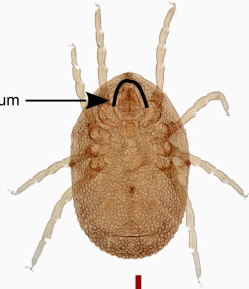


Pictorial Key to Genera of Adult Ticks in the USA

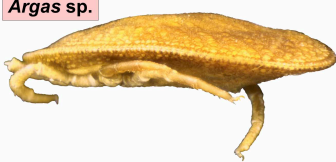
Ventral capitulum + Absent scutum
Family Argasidae (Soft Ticks)

Ventral capitulum

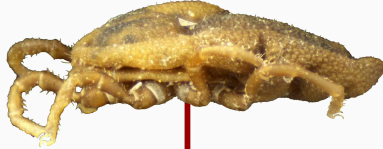


Thin body margin with suture line

Argas sp.



Thick, rounded body margin without suture line

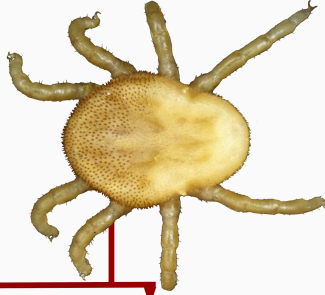


Developed hypostome with teeth;
Integument mamillated

Ornithodoros sp.

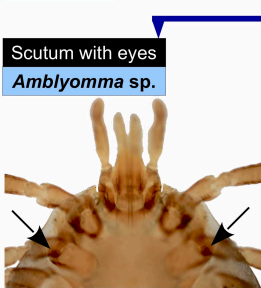


Vestigial hypostome without teeth;
Integument tuberculated or granulated



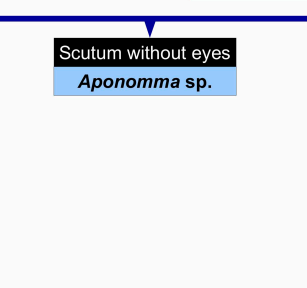
• Host = cattle, horse, rabbit, other
• Integument:
◦ Adult = granular
◦ Nymph = spinose

Otobius sp.



• Host = bats
• Integument:
◦ Adult = small, rounded projections (tubercles)
◦ Nymph = small, rounded projections (tubercles)

Antricola sp.



Scutum with eyes

Amblyomma sp.



Scutum without eyes

Aponomma sp.



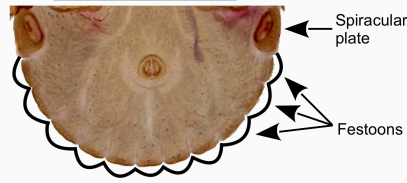
Absent festoons

Rhipicephalus sp. (Boophilus sp.)

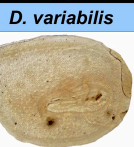


Festoons

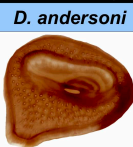
Rhipicephalus sp.



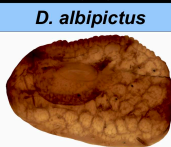
Short hook on spiracular plate
+ > 300 tiny goblet cells



Long hook on spiracular plate
+ 100-200 moderate goblet cells

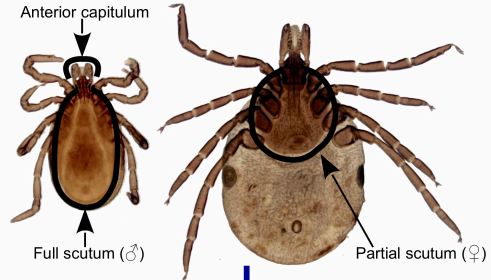


Rounded spiracular plate
+ Fewer large goblet cells



Anterior capitulum + Scutum (full in ♂; partial in ♀)
Family Ixodidae (Hard Ticks)

Anterior capitulum

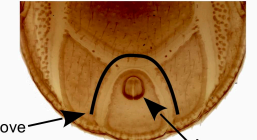


Anal groove behind anus, indistinct, or absent

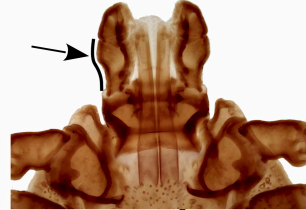


Anal groove in front of anus

Ixodes sp.

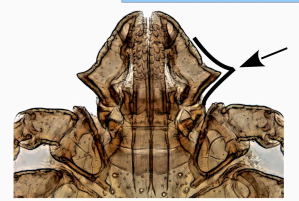


2nd segment of palpi not laterally-produced

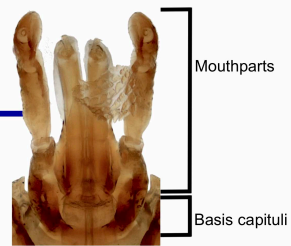


2nd segment of palpi laterally-produced

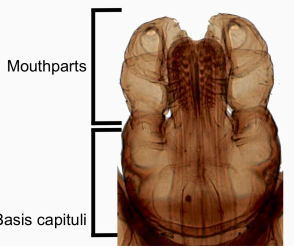
Haemaphysalis sp.



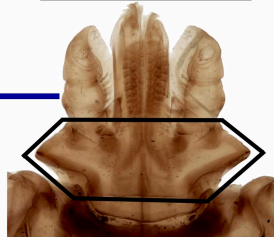
Mouthparts much longer than basis capituli



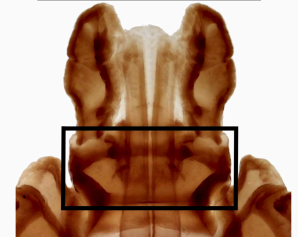
Mouthparts as long as basis capituli



Hexagonal basis capituli

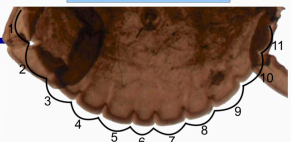


Rectangular basis capituli



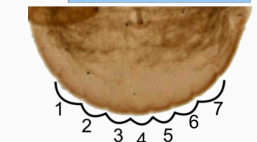
11 Festoons

Dermacentor sp.



7 Festoons

Dermacentor nitens



© Lance Wheeler, 2018

A variation of Harry D. Pratt's, "Pictorial Key to Genera of Adult Ticks in United States."